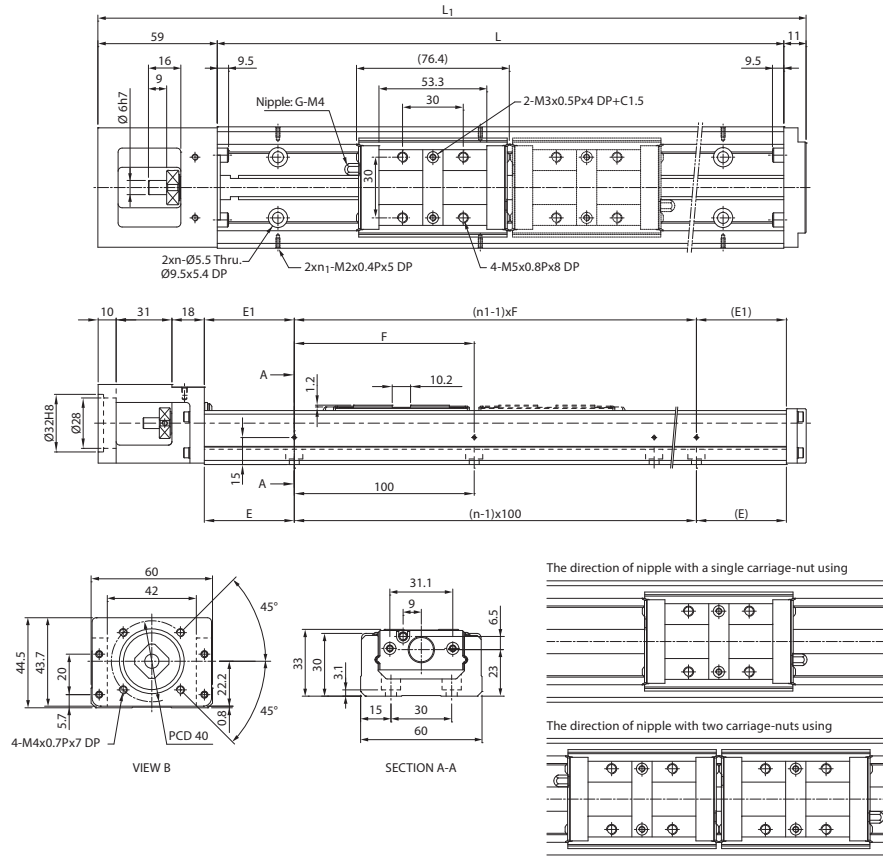


KM33 Standard Type

A type : A single carriage-nut with standard length
B type : Two carriage-nuts with standard length

KM33 Cover Type

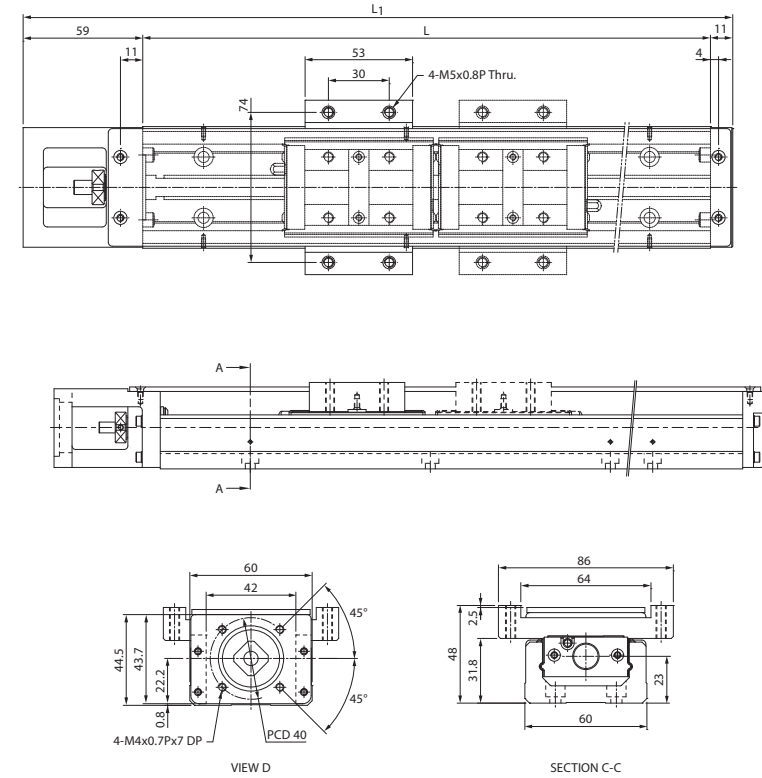
A type : A single carriage-nut with standard length
B type : Two carriage-nuts with standard length



Unit : mm

Rail Length L	Overall Length L ₁	Max. Stroke		E	n	E ₁	n ₁	F	Weight (kg)	
		A Type	B Type						A Type	B Type
		150	220						45	-
200	270	95	-	50	2	50	2	100	1.98	-
300	370	195	120	50	3	50	2	200	2.56	2.91
400	470	295	220	50	4	100	2	200	3.15	3.5
500	570	395	320	50	5	50	3	200	3.85	4.2
600	670	495	420	50	6	100	3	200	4.46	4.81

Note*: The max. stroke of B type is based on two carriage-nuts used in closed contact with each other.



Unit : mm

Rail Length L	Overall Length L ₁	Max. Stroke		Weight (kg)	
		A Type	B Type	A Type	B Type
		150	220	45	-
200	270	95	-	2.18	-
300	370	195	120	2.76	3.21
400	470	295	220	3.38	3.83
500	570	395	320	4.09	4.54
600	670	495	420	4.71	5.16

Note*: The max. stroke of B type is based on two carriage-nuts used in closed contact with each other.