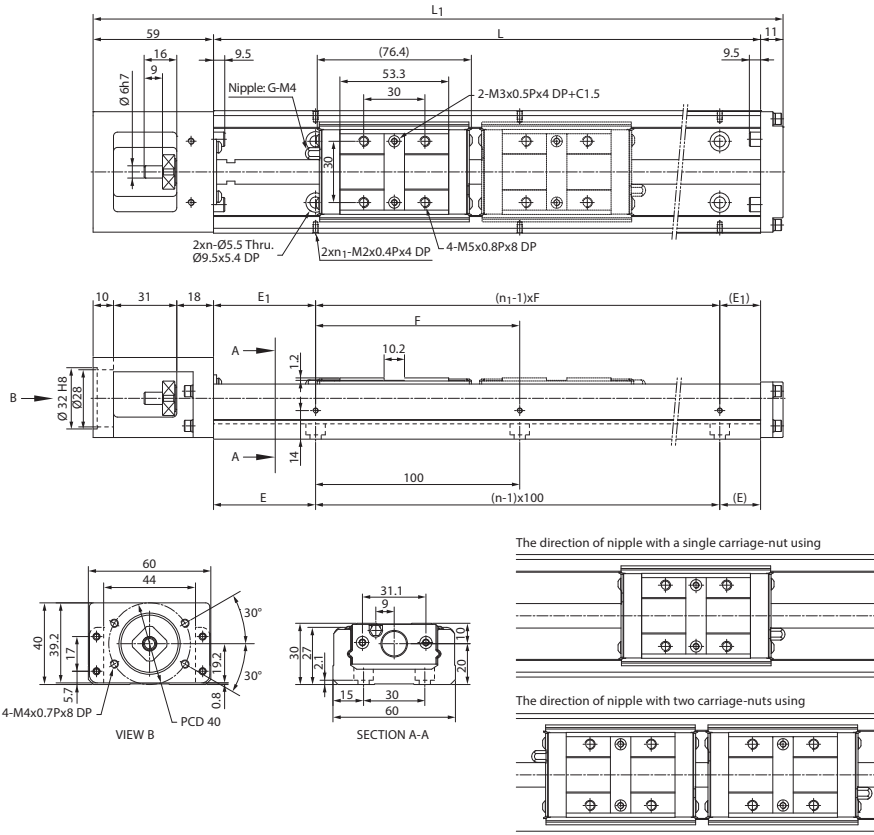


KM30 Standard Type

A type : A single carriage-nut with standard length
B type : Two carriage-nuts with standard length

KM30 Cover Type

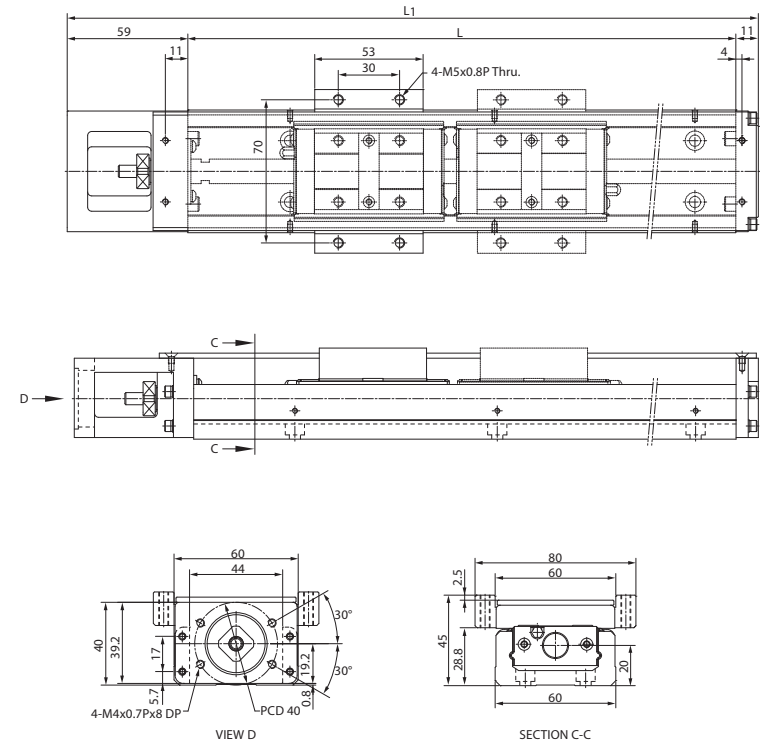
A type : A single carriage-nut with standard length
B type : Two carriage-nuts with standard length



Unit : mm

Rail Length L	Overall Length L ₁	Max. Stroke		E	n	E ₁	n ₁	F	Weight (kg)	
		A Type	B Type						A Type	B Type
150	220	45	-	25	2	25	2	100	1.5	-
200	270	95	-	50	2	50	2	100	1.81	-
300	370	195	120	50	3	50	2	200	2.39	2.74
400	470	295	220	50	4	100	2	200	2.98	3.33
500	570	395	320	50	5	50	3	200	3.68	4.03
600	670	495	420	50	6	100	3	200	4.29	4.64

Note*: The max. stroke of B type is based on two carriage-nuts used in closed contact with each other.



Unit : mm

Rail Length L	Overall Length L ₁	Max. Stroke		Weight (kg)	
		A Type	B Type	A Type	B Type
150	220	45	-	1.7	-
200	270	95	-	2.01	-
300	370	195	120	2.59	3.04
400	470	295	220	3.21	3.66
500	570	395	320	3.92	4.37
600	670	495	420	4.54	4.99

Note*: The max. stroke of B type is based on two carriage-nuts used in closed contact with each other.